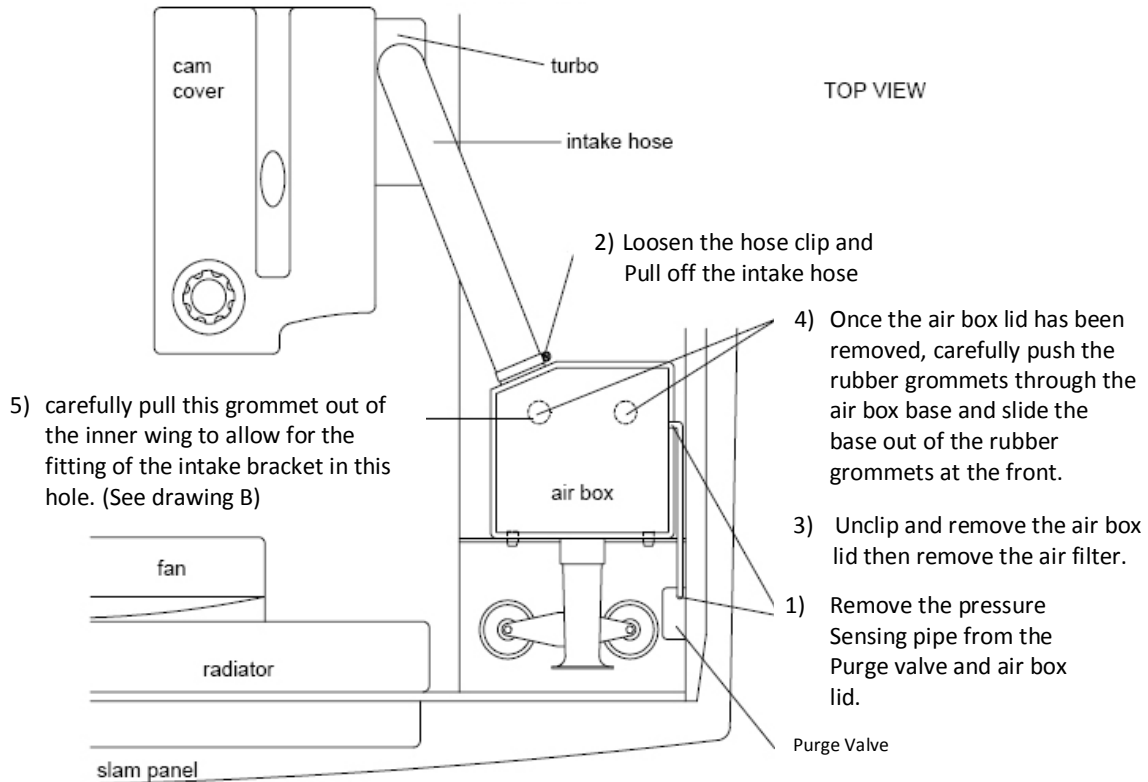


PLEASE READ THESE INSTRUCTIONS CAREFULLY BEFORE FITTING THIS KIT

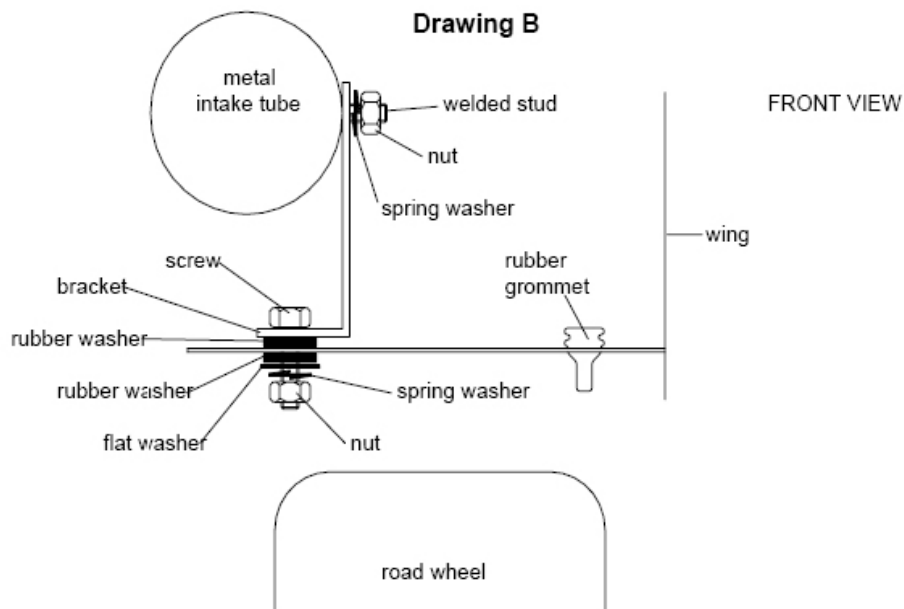
If you have a problem however small, call our technical department.

Tel:- 01925 636950 Fax:-01925 243111 Mon - Thur 8.00 - 5.00

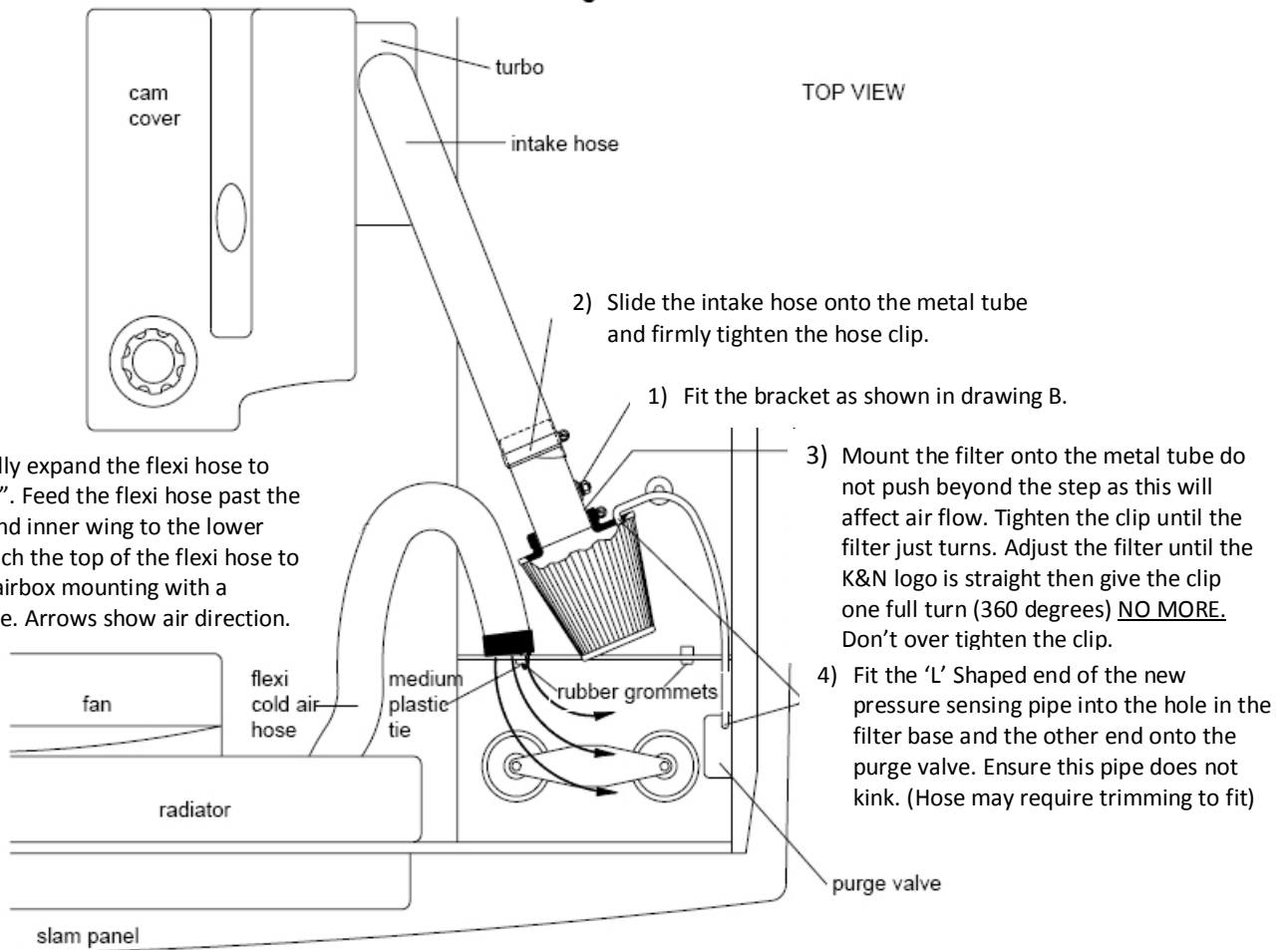
Drawing A



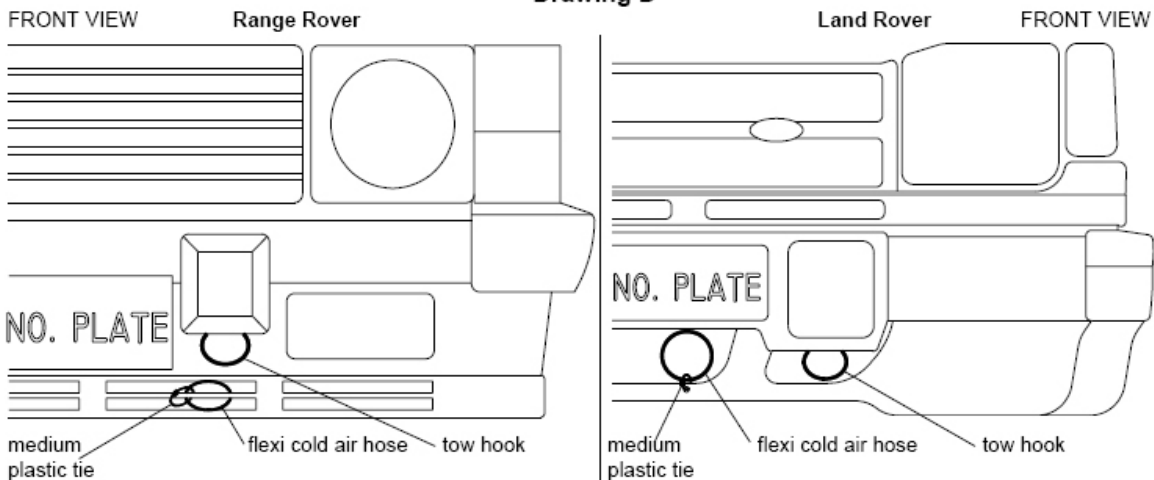
Drawing B



Drawing C



Drawing D



Ovalise the flexi hose end; Pierce/drill a 3mm hole in the plastic sleeve and attach it to the grille with a medium plastic tie.

Drill / pierce a 3mm hole in the plastic sleeve and lower bumper. Secure the hose to the bumper with a medium plastic tie supplied.

Tuning.

CAT. Cars No adjustments required

An increase in fuel mixture may be required if further modifications are carried out.

Filter Maintenance.

Under normal conditions clean and re-oil the filter at approx. 40,000miles / 65,000km

Use only K&N cleaner and oil. Follow the instructions carefully.

K&N Filters are pre oiled and ready to fit.

The advantage of K&N's cold air intake system.

Cooler air being denser will show positive improvements in power

Over filter systems that draw hot air from the engine bay.

This Kit Should Contain:

1	x	Clamp On Filter
1	x	Cold Air Hose Assembly
1	x	Metal Intake Tube
1	x	Instruction Sheet
1	x	Instruction Pack:-
	1	x Filter Maintenance Sheet
	1	x K&N Window Sticker
	1	x Million Mile Warranty
	1	x Leaflet
1	x	Fixing kit:-
	1	x Bracket
	1	x #44 Hose Clamp
	1	x Pressure Sensing Pipe
	1	x M6 x 20 Screw
	1	x 6mm x 25 Flat Washer
	2	x Rubber Washers
	2	x M6 Nuts
	2	x Spring Washers
	2	x Medium Cable Ties

FITTING YOUR OWN 57i KIT

If not it is essential that the person fitting the kit (e.g. mechanic) carefully follows these particular instructions even if he has fitted K&N kits before. This will save you both time and money. Incorrectly fitted kits may show a loss in performance e.g. the positioning of the essential cold air hose. (Flexi expandable and rubber hoses are used)

A final check Under the bonnet by yourself with the instructions would seem sensible.