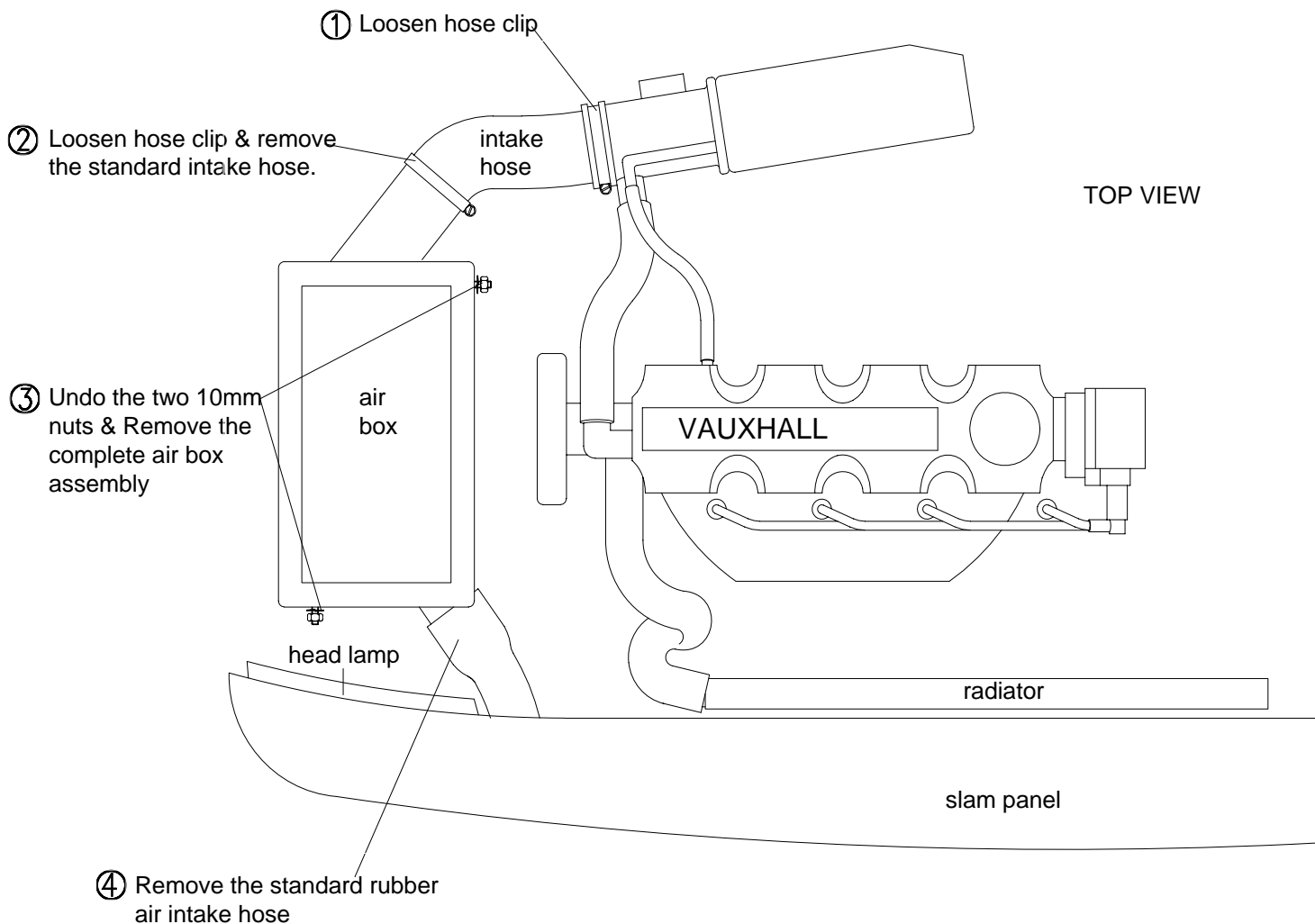


**PLEASE READ THESE INSTRUCTIONS CAREFULLY BEFORE FITTING THIS KIT**

**If you have a problem, however small, call our Technical Department**

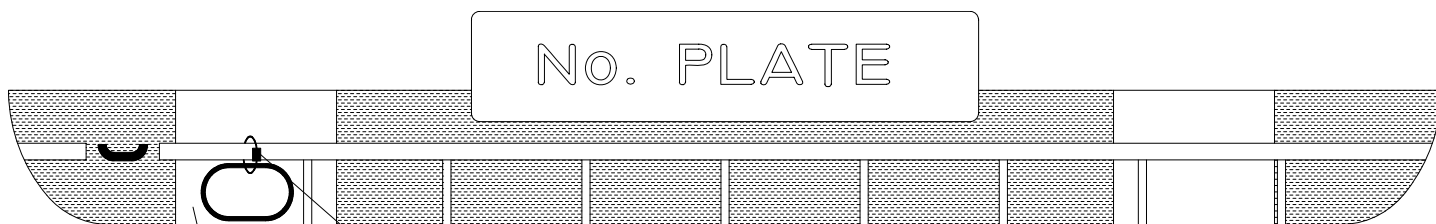
Tel:- 01925 636950. Fax:- 01925 243111. Mon - Thurs 8.30 - 5pm.

**Drawing A**



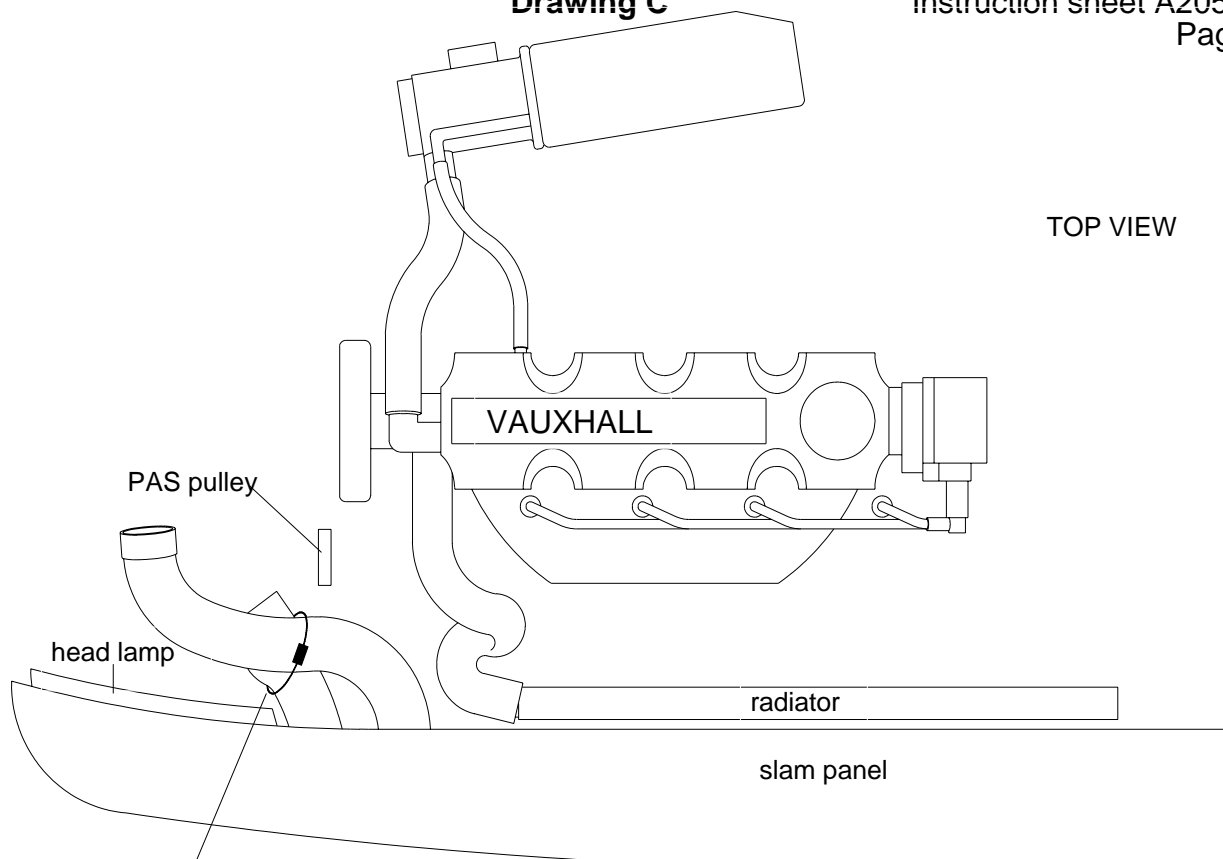
**Drawing B**

- ① Carefully expand the flexi cold air hose to approximately 53cm/21", Pierce / Drill a 3mm hole in the top of the hose. Ovalise the holed end of the hose and feed it down to the lower front spoiler past the standard air intake hose



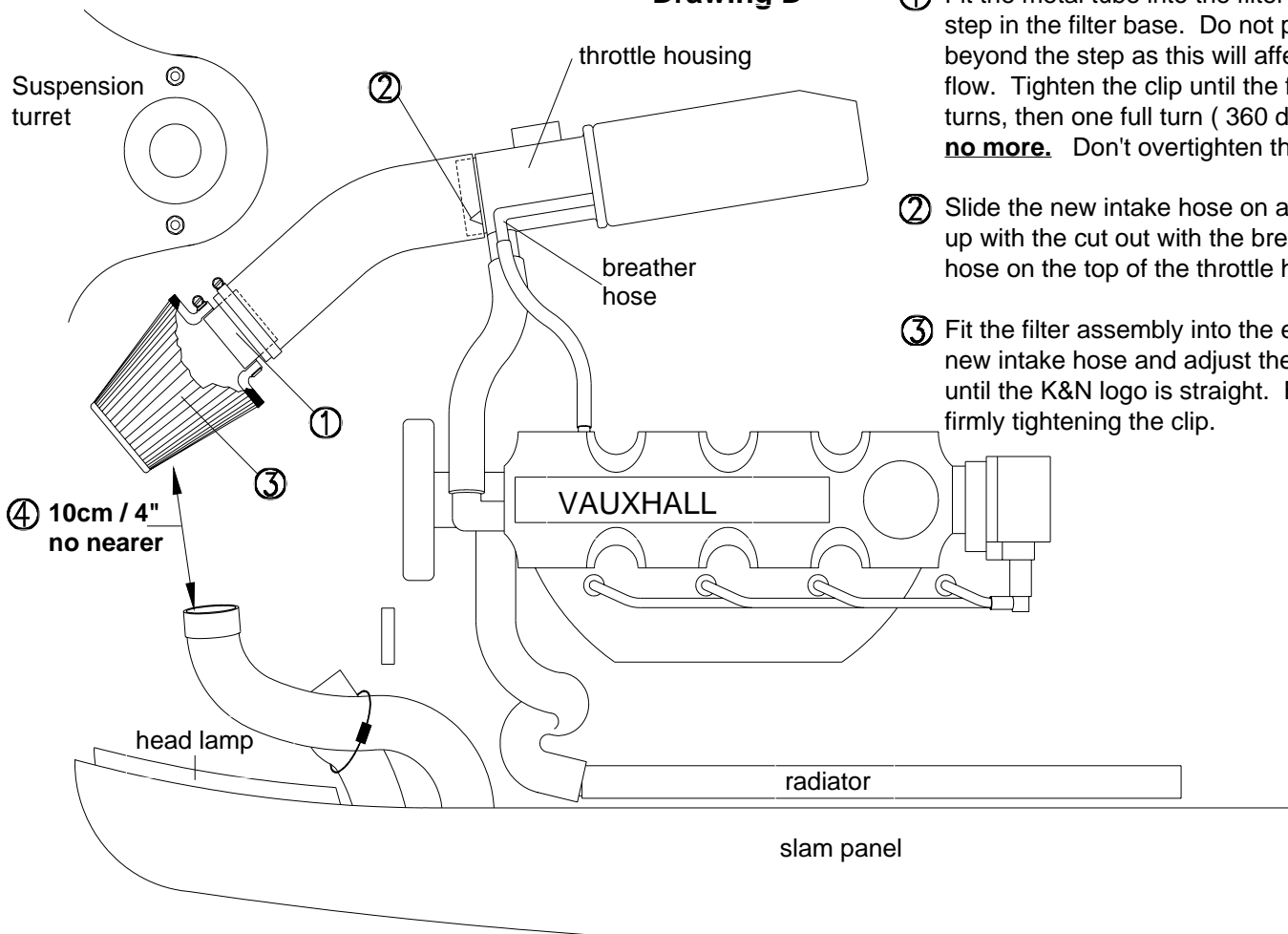
- ② Cut out this section of the spoiler, models may vary.

**FRONT VIEW**



Drill / Pierce 3 mm hole in the right hand side of the standard air intake hose and tie wrap the new flexi cold air hose to fit, ensure that the flexi cold air hose is kept well away from the power assisted steering (PAS) pulley.

Drawing D



- ① Fit the metal tube into the filter up to the step in the filter base. Do not push in beyond the step as this will affect air flow. Tighten the clip until the filter just turns, then one full turn ( 360 degrees) **no more.** Don't overtighten the clip.
- ② Slide the new intake hose on and line up with the cut out with the breather hose on the top of the throttle housing.
- ③ Fit the filter assembly into the end of the new intake hose and adjust the filter until the K&N logo is straight. Before firmly tightening the clip.

④ 10cm / 4" no nearer

④ Position the cold air hose towards the filter to finish approx. 10cm / 4" from the filter (**no nearer**)

**Tuning.****CAT. Cars** No adjustments required

An increase in fuel mixture may be required if further modifications are carried out.

**Filter Maintenance.**

Under normal conditions clean and reoil the filter at approx. 40,000 miles / 65,000km.

**Use only K&N cleaner and oil** and follow the instructions carefully.**K&N filters are pre-oiled ready to fit****The advantage of K&N's cold air intake system.**

Cooler air being denser, will show positive improvements in power

This Kit Should Contain:

**FITTING YOUR OWN 57i KIT**

- 1 x Air Filter
- 1 x Rubber Intake Hose
- 1 x Cold Air Hose Assembly
- 1 x Instruction Sheet
- 1 x Instruction Pack :-
  - 1 x Filter Maintenance Sheet
  - 1 x K&N window sticker
  - 1 x Million Mile Warranty
  - 1 x Leaflet
- 1 x Fixing Kit :-
  - 1 x Hose Clip size #44
  - 1 x Hose Clip size #40
  - 1 x Cable Tie (19cm long)
  - 1 x Cable Tie (35cm long)
  - 1 x Hose Clip #48
  - 1 x Tube

If not **it is essential** that the person fitting the kit (e.g. mechanic) **carefully follows these particular instructions** even if he has fitted K&N kits before. This will save you both time and money. kits incorrectly fitted may show a loss in performance e.g. the positioning of the essential cold air hose, (flexi expandable and rubber hoses are used).

**A final check** under the bonnet, by yourself with the instructions, would seem sensible