

PLEASE READ THE INSTRUCTIONS CAREFULLY BEFORE FITTING THE KIT.**If you have a problem, however small, call our Technical Department.**

Tel:- 01925 636950. Fax:- 01925 243111. Mon - Thurs 8.30 - 5pm.

- 1 Remove the plug from the mass air sensor (**MAS**). Release the two nuts securing the air box and remove the complete air box system.
- 2 Remove the rubber sleeve from the front of the air box.
- 3 **Removing the MAS from the air box lid.**
Remove screw number 1. **Drawing A.**
- 4 Remove screw number 2. **Drawing B.**
- 5 Fit the new U shaped bracket under the hose clip at approx. 11 O'clock.
Don't tighten the clip yet. Drawing C.
- 6 Fit the new flat bracket to the suspension turret and to the U bracket using the screw washer and nut supplied. **Firmly** tighten hose clip. **Drawing D.**
- 7 **Raise the front of the car, taking all the necessary safety precautions.**
- 8 **Carefully** expand the flexi cold air hose to approximately 66cm/26". Ovalise one end of the hose.
- 9 Feed the oval end of the cold air hose downwards to finish behind the front grille.
Drawing E.
- 10 Position the other end of the cold air hose towards the filter to finish approximately 10cm/4" from the filter (**no nearer**), and secure the hose to the radiator top hose and power steering pipe. **Drawings F & G.**
- 11 **Tuning.**
CAT. Cars, no adjustments are required.
An increase in fuel may be required if further engine modifications are carried out.
- 12 **Filter maintenance.**
Under normal conditions clean and reoil the filter at approx. 50,000 miles / 80,000 Km.
Use only K&N cleaner and oil and follow the instructions carefully.

K&N Filters are pre-oiled ready to fit.**The advantage's of K&N's cold air intake system**

Cooler air being denser, will show positive improvements in power over filter systems that draw hot air from the engine bay.

This kit should contain.

- 1 x Air filter.
- 1 x Cold air hose assembly
- 1 x 1 x Instruction sheet.
- 1 x Instruction pack:-
 - 1 x Filter maintenance sheet.
 - 1 x K&N window sticker.
 - 1 x Million mile warranty card.
 - 1 x Leaflet.
- 1 x Fixing kit:-
 - 1 x Hose Clamp
 - 2 x Brackets
 - 1 x M6 x 12 Hex Screw.
 - 1 x 6mm Spring Washer.
 - 1 x M6 Hex Nut.
 - 1 x Metal Washer.
 - 2 x Plastic cable ties (35cm long).

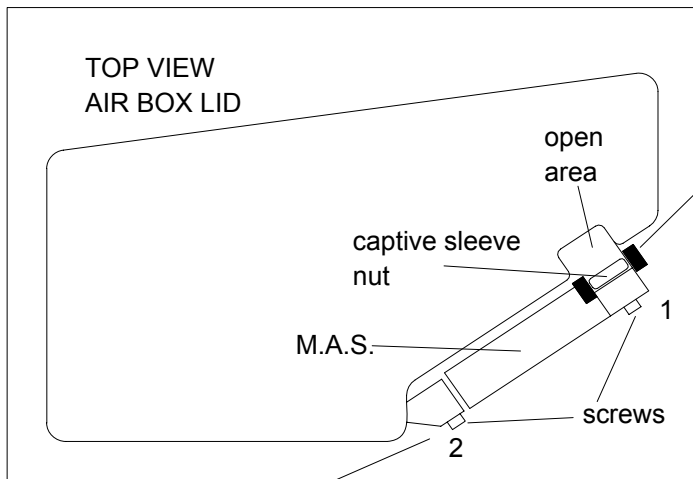
**IMPORTANT INSTRUCTIONS
FOR ROUND ENTRY
CLAMP ON AIR FILTERS**

Gently tighten the hose clip to the point where the filter will just rotate on the pipe or intake flange. Reposition the K&N logo straight, then **give the clip two turns i.e. 360 , no more.**

FITTING YOUR OWN 57i KIT

If not, **it is essential** that the person fitting the kit (e.g. mechanic) **carefully follows these particular instructions** even if he has fitted K&N kits before. This will save you both time and money. Kits incorrectly fitted may show a loss in performance e.g. the positioning of the essential cold air hose, (flexi expandable and rubber hoses are used).

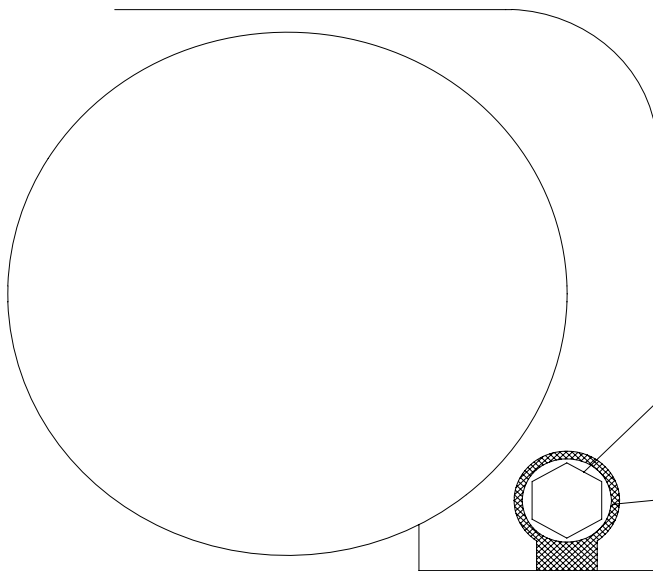
A final check under the bonnet, by yourself, with the instructions, would seem sensible.



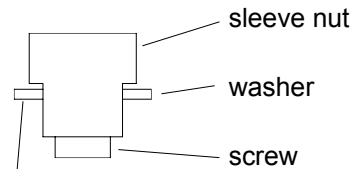
Position vice grips firmly on the plastic section around the captive sleeve nut. Keep vice grips in position and release the hex screw 1. With the screw partly released, tap the screw head in, moving the captive nut into the open area. Now use an open ended spanner to complete the removal.

See drawing B

Drawing B



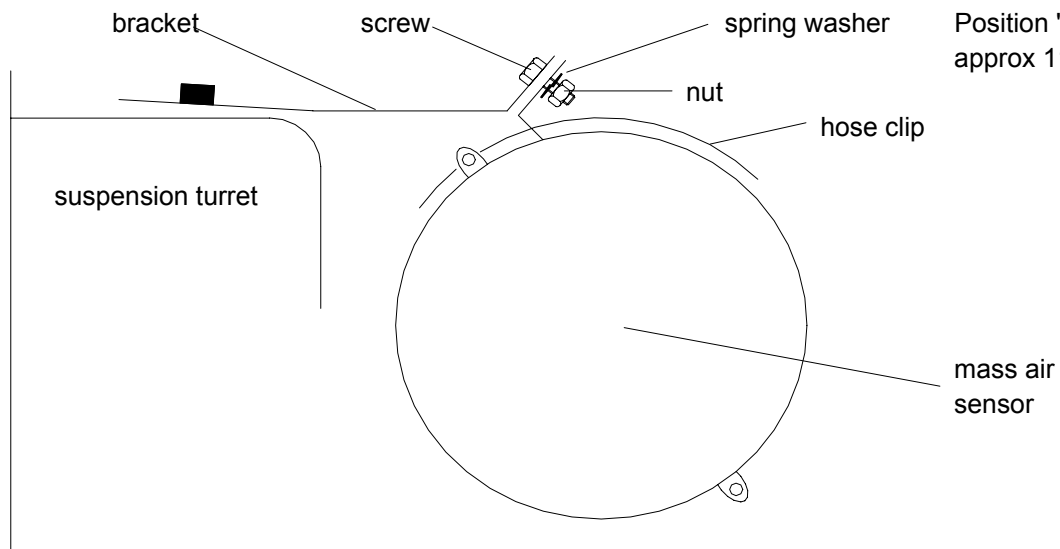
Removing screw 2. with captive sleeve nut.



Washer supplied in kit if the air box is returned to standard

Using a very slim chisel, or a sharp thin screwdriver, carefully cut away the area around the captive nut. Until a 12mm socket fits. This will have no detrimental effect on the airbox . Remove the screw and tap out the captive sleeve nut.

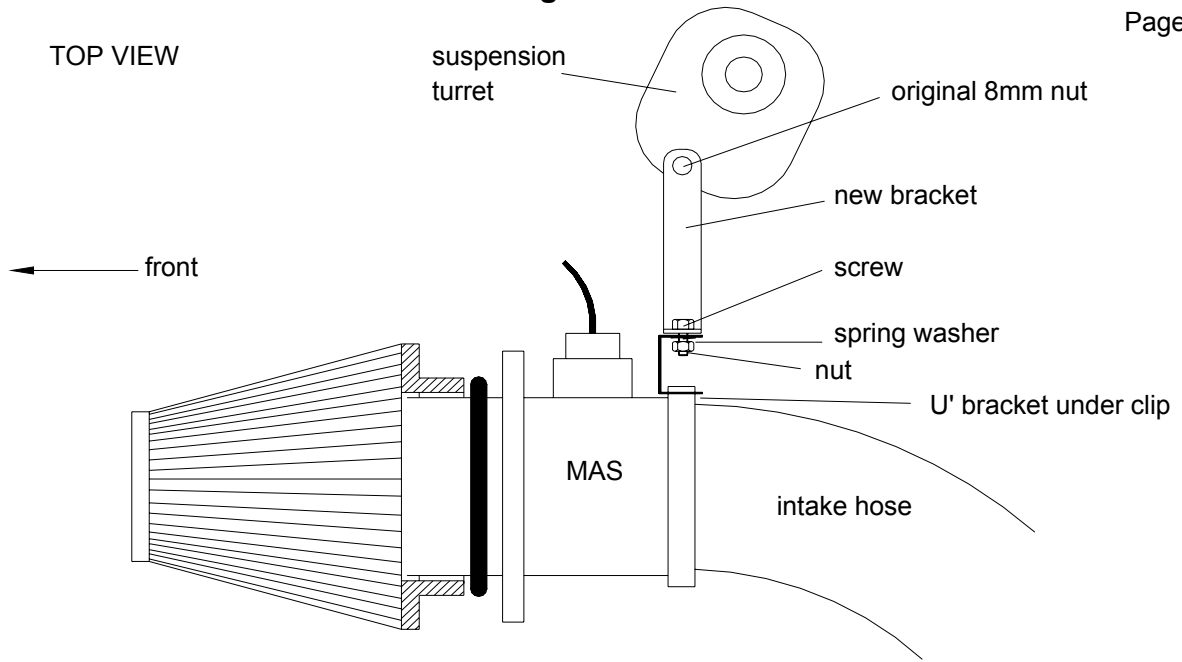
Drawing C



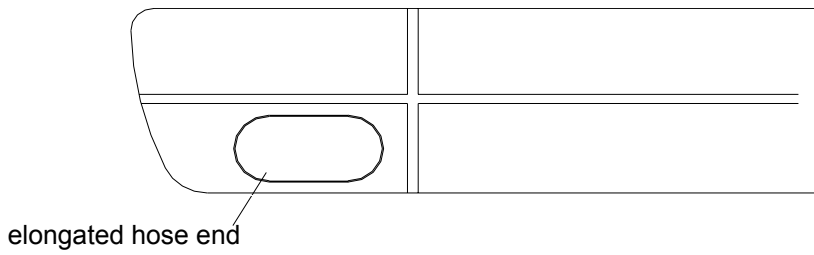
Position 'U' bracket at approx 11 o'clock

FRONT VIEW

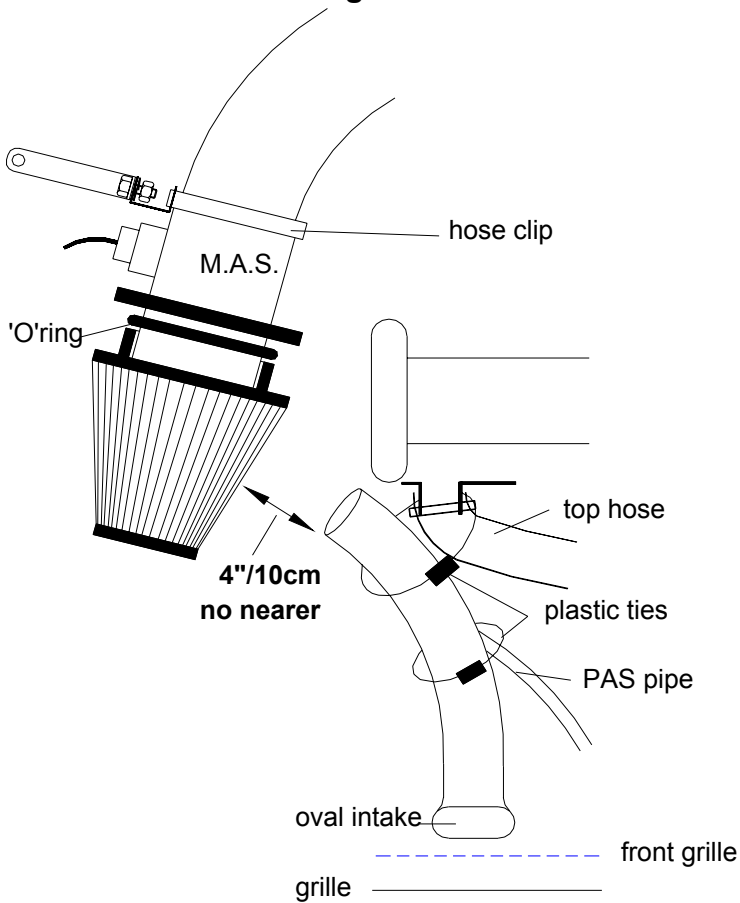
TOP VIEW



Drawing E



Drawing F



Drawing G

