



INSTALLATION INSTRUCTIONS

PART NUMBER: RK-3943

This Assembly Fits:

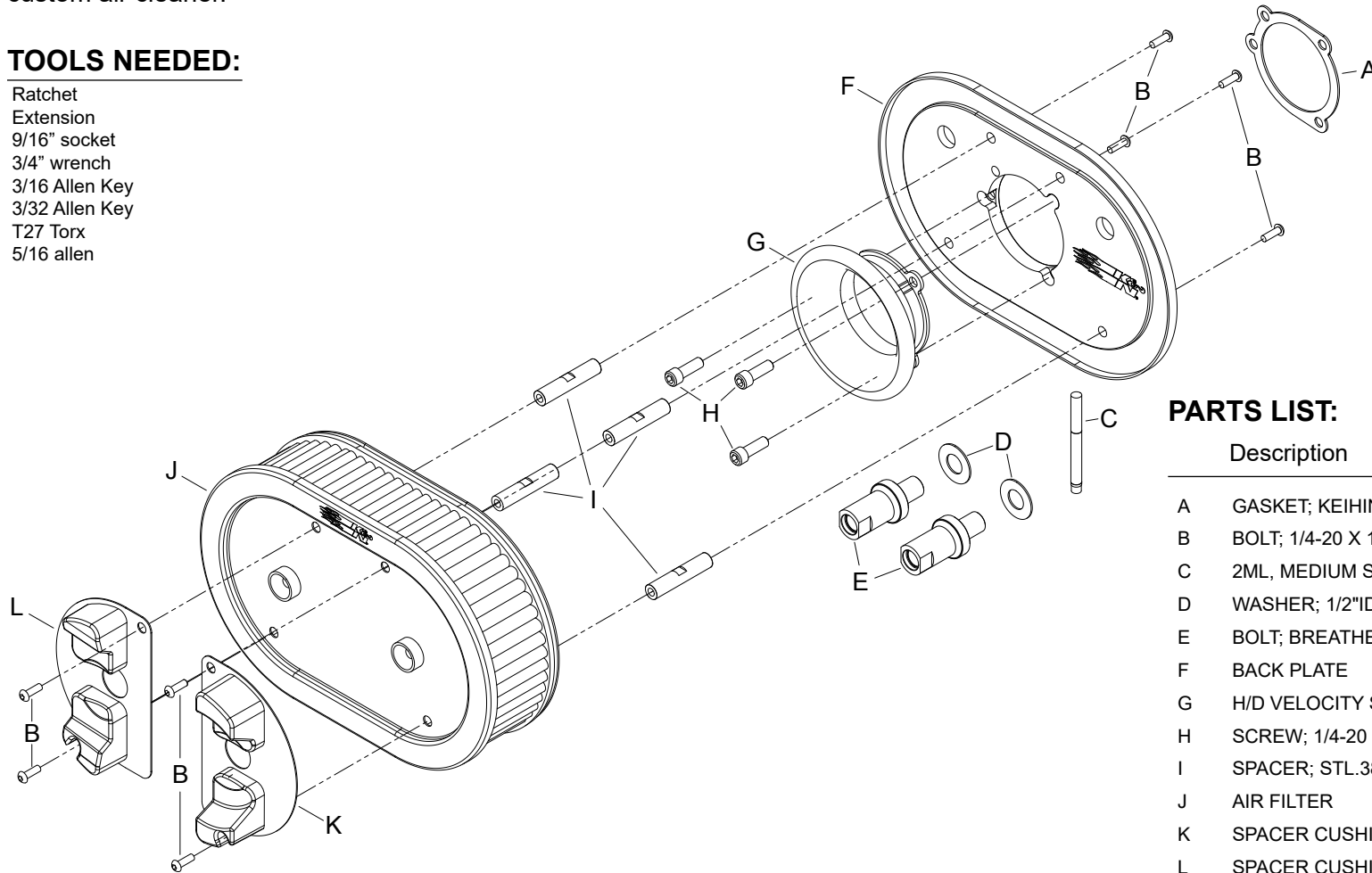
SEE CATALOG FOR CURRENT APPLICATIONS

SEE KNFILTERS.COM FOR CARB STATUS ON EACH PART FOR A SPECIFIC VEHICLE

Congratulations, you have purchased the finest custom air cleaner that money can buy. With proper care, this filter will last 1 million miles or more. This custom air cleaner replaces the stock air cleaner assembly. The following procedure **MUST** be followed to ensure a proper fit and seal of the custom air cleaner.

TOOLS NEEDED:

- Ratchet
- Extension
- 9/16" socket
- 3/4" wrench
- 3/16 Allen Key
- 3/32 Allen Key
- T27 Torx
- 5/16 allen



PARTS LIST:

Description	Qty.	Part #
A GASKET; KEIHIN CARB.	1	09267
B BOLT; 1/4-20 X 1/2 BUTTON, SS	8	07706
C 2ML, MEDIUM STRENGTH	1	482
D WASHER; 1/2"ID, .040"THK	2	08322
E BOLT; BREATHER FOR RK-3929	2	82923
F BACK PLATE	1	01918
G H/D VELOCITY STACK, RK-3929	1	08935
H SCREW; 1/4-20 X 3/4 SOC. HD.	3	07731
I SPACER; STL.380"OD X 1.81"L	4	08599-1
J AIR FILTER	1	E-3040
K SPACER CUSHION ASSEMBLY	1	82919
L SPACER CUSHION ASSEMBLY	1	82920

If you need any assistance please call 1-800-858-3333 to speak with a representative in our Customer Service Center before returning the product.

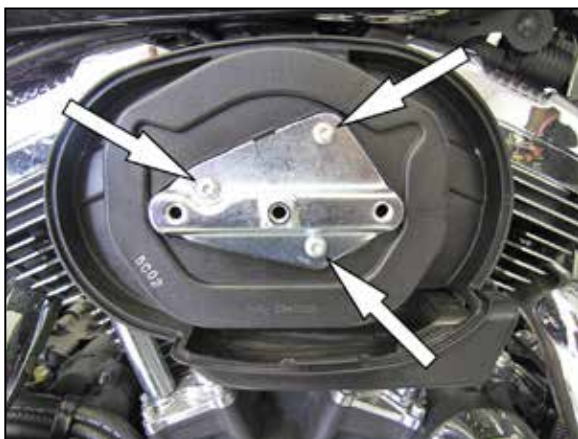
NOTE: FAILURE TO FOLLOW INSTALLATION INSTRUCTIONS AND NOT USING THE PROVIDED HARDWARE MAY DAMAGE THE INTAKE TUBE, THROTTLE BODY AND ENGINE.

TO START:

1. Turn off the ignition and disconnect the negative battery cable.



2. Remove the two bolts that secure the factory filter cover and then remove the filter cover.



3. Remove the three bolts that secure the factory air filter and then remove the air filter.



4. Remove the two stock breather bolts shown and then remove the factory filter back plate.

NOTE: K&N Engineering, Inc. recommends that customers do not discard the factory air intake components.



5. Remove the bolt shown securing the throttle body bracket and then remove the bracket.



6. Install the four provided stand-offs onto the K&N® back plate using the provided hardware. Be sure to place one drop of the supplied thread locker onto the bolts before assembly.



7. Install the provided venturi into the K&N® back plate as shown.



8. Install the three throttle body bolts through the venturi and back plate as shown.



9. Install the provided throttle body gasket onto the back plate as shown.



10. Place one drop of thread locker onto the threads and then install the two provided breathers onto the cylinder heads as shown.



11. Install the back plate assembly onto the throttle body and then secure with the two factory breather bolts and the three throttle body bolts.



12. Install the K&N® air filter and the two bonnet stand-offs and secure with the provided hardware. **NOTE: Be sure to place one drop of thread locker on to the air filter mounting bolts.**



13. Remove the rubber seal from the factory air filter bonnet and then install the bonnet onto the air filter and secure with the factory hardware. Reconnect the negative battery cable.

14. Reconnect the vehicle's negative battery cable. Double check to make sure everything is tight and properly positioned before starting the vehicle.

15. The C.A.R.B. exemption sticker, (attached), must be visible, so the emissions inspector can see it when the vehicle is required to be tested for emissions. California requires testing every two years, other states may vary.

16. It will be necessary for all K&N® custom air cleaners to be checked periodically for realignment, clearance and tightening of all connections. Failure to follow the above instructions or proper maintenance may void warranty.

ROAD TESTING:

1. Start the engine with the transmission in neutral. Listen for air leaks or odd noises. For air leaks secure hoses and connections. For odd noises, find cause and repair before proceeding. This kit will function identically to the factory system except for being louder and much more responsive.

2. Test ride the vehicle. Listen for odd noises or rattles and fix as necessary.

3. If road test is fine, you can now enjoy the added power and performance from your kit.

4. K&N Engineering, Inc., requires cleaning the intake system's air filter element every 50,000 miles.

When used in dusty or off-road environments, our filters will require cleaning more often. We recommend that you visually inspect your filter once every 25,000 miles to determine if the screen is still visible. When the screen is no longer visible some place on the filter element, it is time to clean it. To clean and re-oil, purchase our filter Recharger® service kit, part number 99-5050 or 99-5000 and follow the easy instructions.

INTAKE SYSTEMS FOR VEHICLES LISTED ARE 50 STATE LEGAL. SEE KNFILTERS.COM FOR CARB STATUS ON EACH PART FOR A SPECIFIC VEHICLE.